

Follow these instructions very closely and do not skip any part!

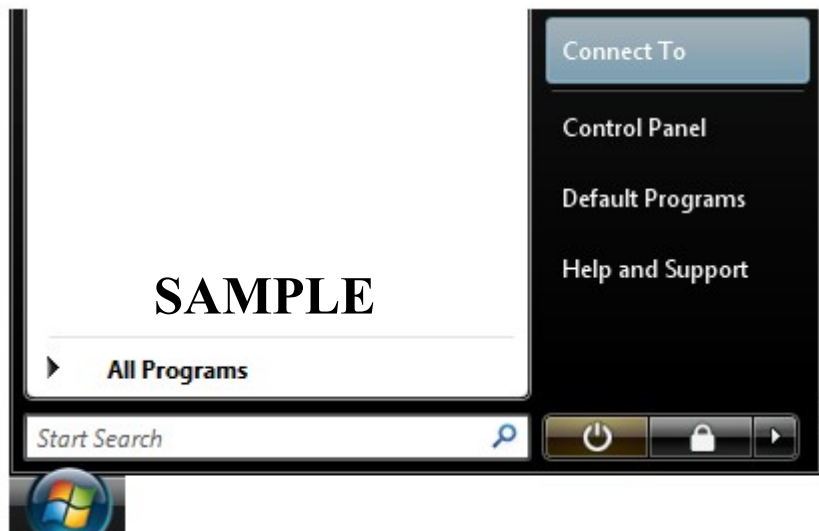
Dial Up Instructions for Windows Vista

The following instructions will allow you to setup your computer for use with Midcoast Internet Solutions through your modem.

Note: Please be sure to have the telephone cord already connected to the wall jack and computer.

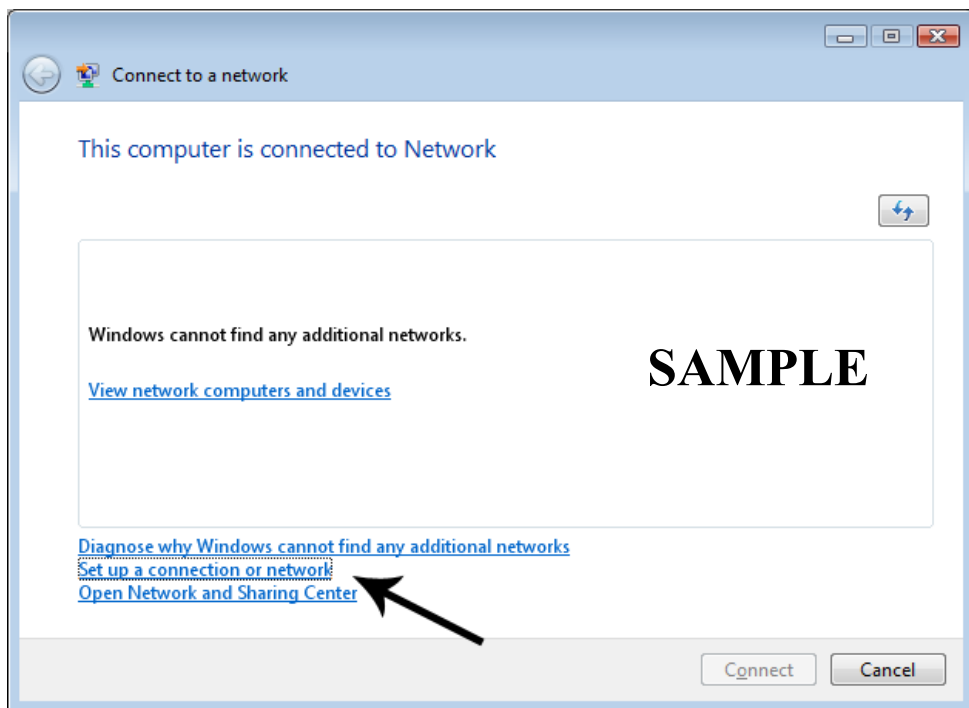
Midcoast Internet Solutions may not be held responsible for any problems caused by this configuration.

(Window A)



- On the Windows desktop, click on the “Windows Logo” button, generally in the lower left hand corner. Click on “Connect To” (See Window A).

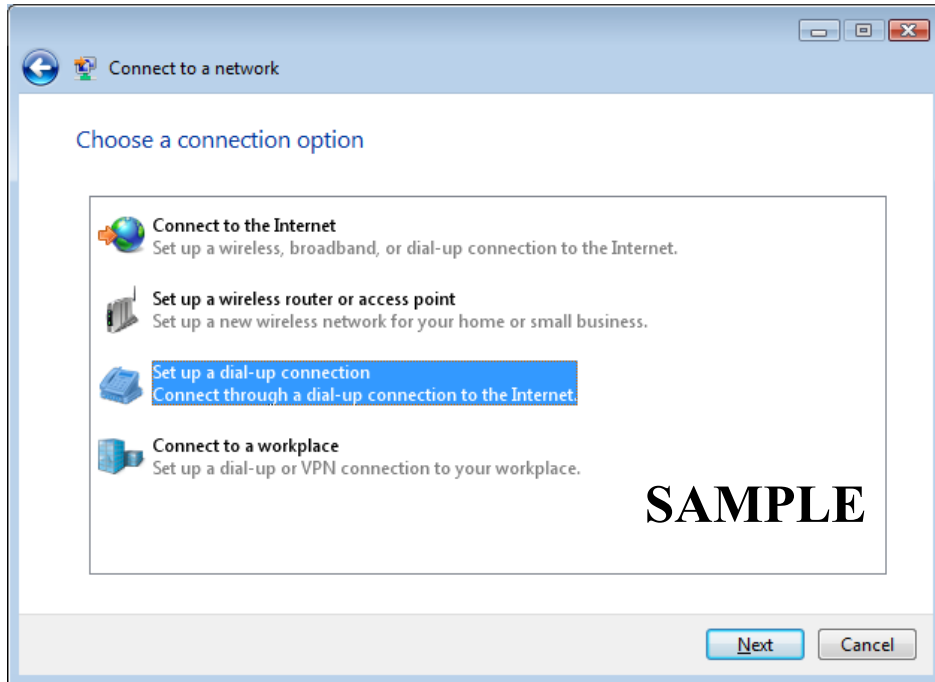
(Window B)



- Click on “Set up a connection or network.”

(See Window B)

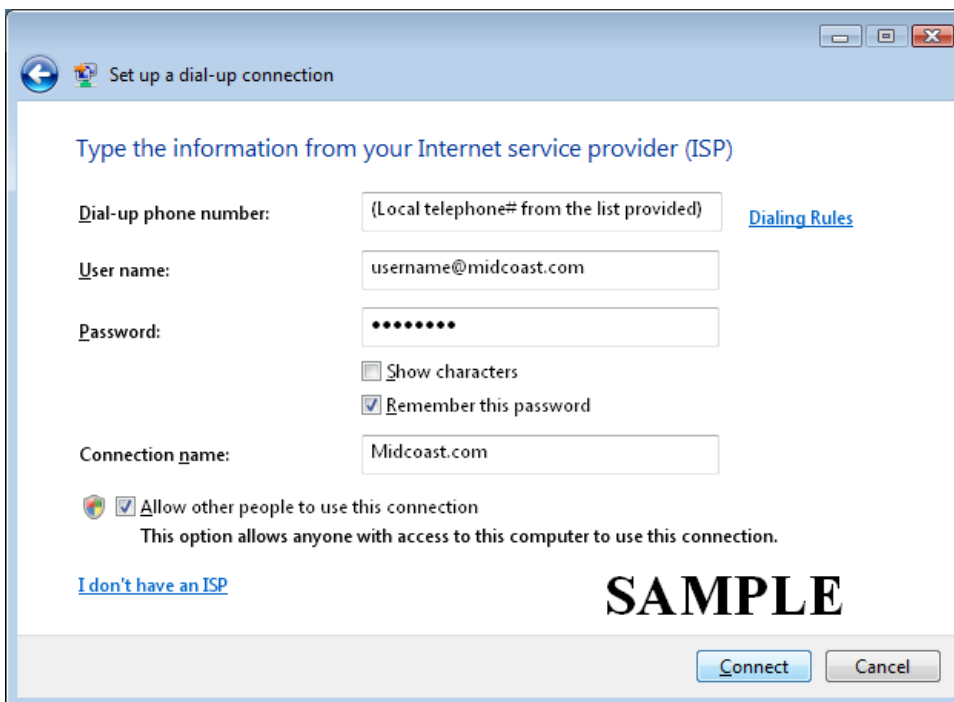
(Window C)



- Click on “Set up a dial-up connection,” then click “Next.”

(See Window C)

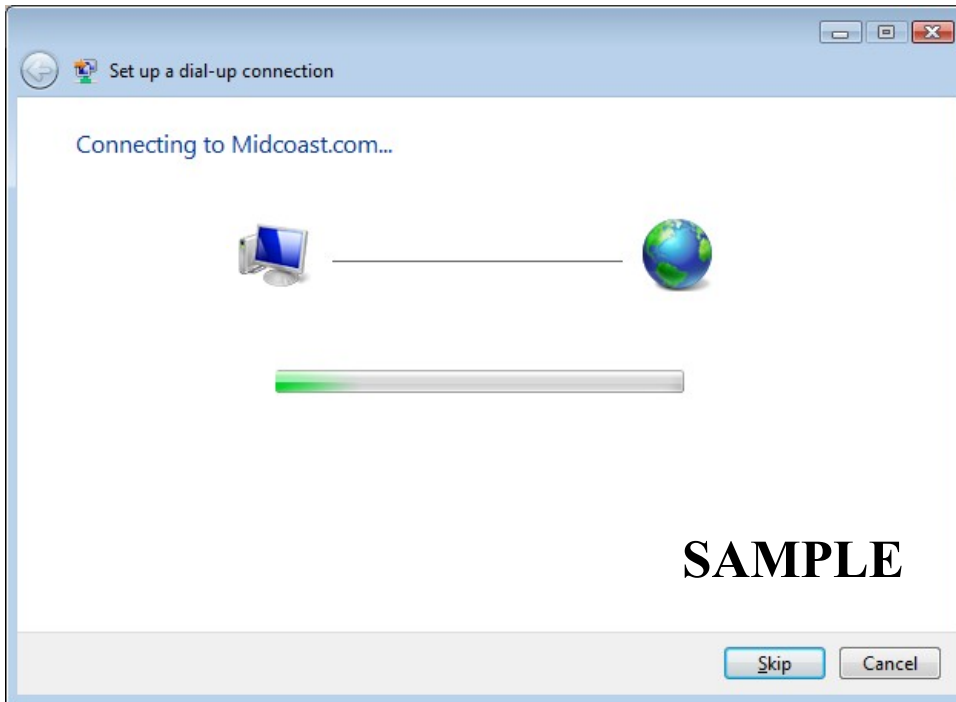
(Window D)



- In the “Dial-up phone number:” field, put in the telephone number from the list provided that is local for you. **Please be sure to choose a local number for your area. Midcoast Internet Solutions will not be held responsible for any long distance charges.**
- In the “User name:” field, put your midcoast.com e-mail address.
- In the “Password:” field, put your password for your midcoast account.

- Put a check mark in the “Remember this password” field.
- In the “Connection name:” field, type in Midcoast.com.
- If you have additional users on this computer with their own profile, or plan on creating additional users in the future, put a check mark in the “Allow other people to use this connection.”
- Click “Connect.” (See Window D)

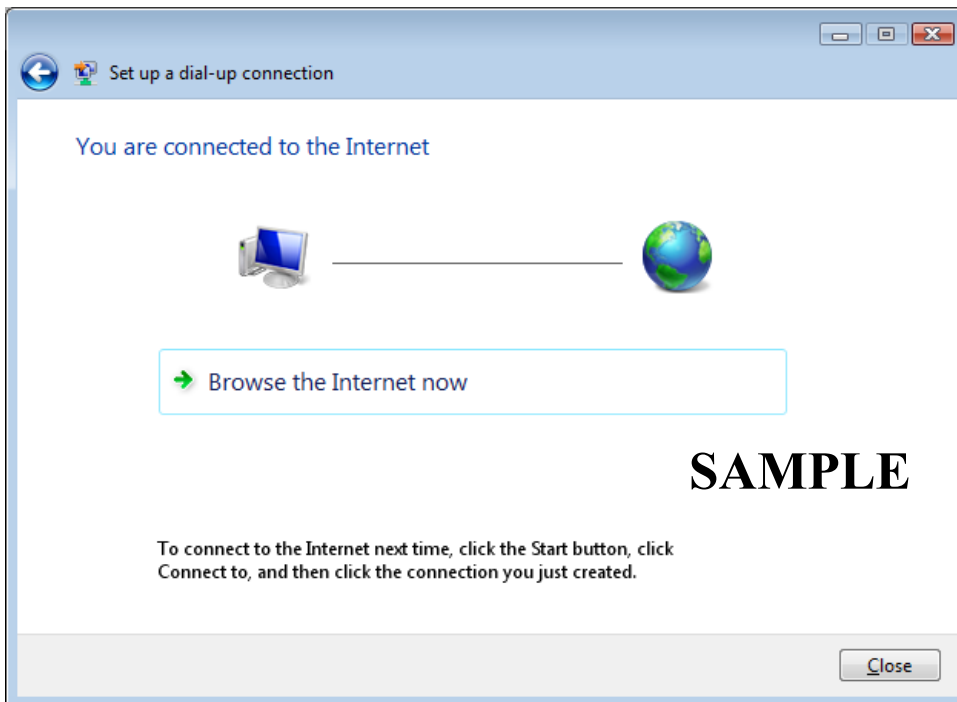
(Window E)



- During this time, your computer is connecting to the midcoast server.
Note: Do not press skip or cancel.

(See Window E)

(Window F)



- Once connected, click close.

(See Window F)

(On the next screen, select home as your network settings, then click close.)

Once you are connected, you can open a web browser to go to the Web. Or to check e-mail, open an e-mail program.

To disconnect, right click on the icon of the two computers in the bottom right-hand corner of the screen. Left click Disconnect from, then left click Midcoast.com.

(Follow the instructions at the bottom of (Window F) to re-connect to MIS.)