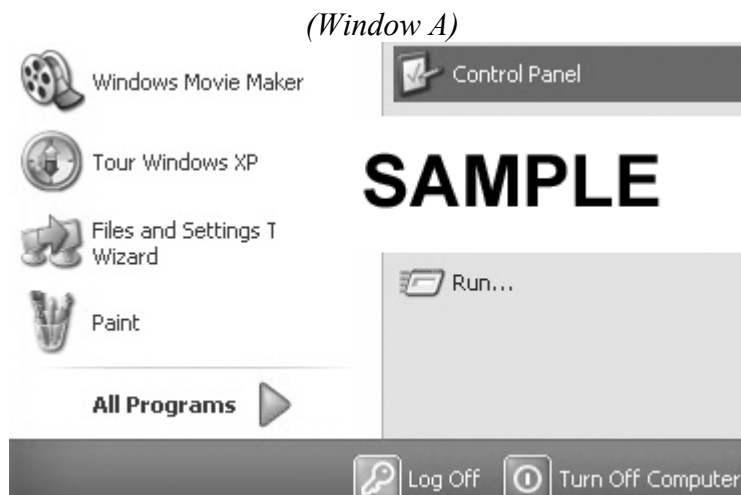


Follow these instructions very closely and do not skip any part! **Dial Up Instructions for Windows XP**

The following instructions will allow you to setup your computer for use with Midcoast Internet Solutions through your modem.

Midcoast Internet Solutions may not be held responsible for any problems caused by this configuration.



- On the Windows desktop, click on the “Start” button, generally in the lower left hand corner. Click on “Control Panel” (See Window A).



- In “Control Panel” click on “Network and Internet Connections.”

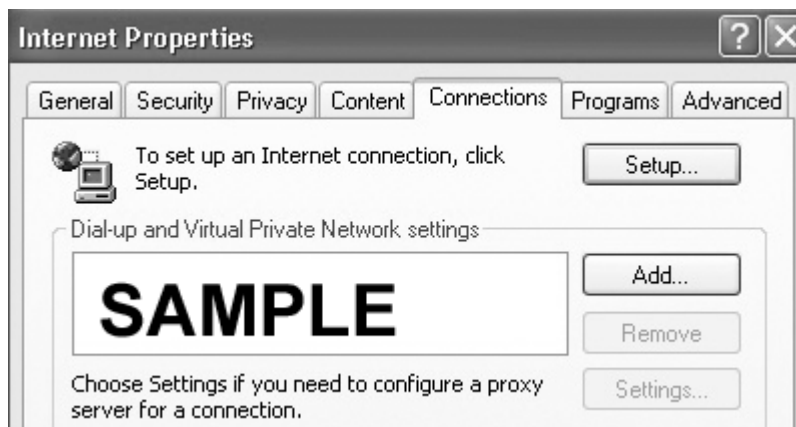
(Window C)

- In “Network and Internet Connections” click on “Internet Options.”

(Window D)

- Under the Homepage setting you can change the “Address” to midcoast.com.
- In “Internet Properties” click on the “Connections” tab.

(Window F)



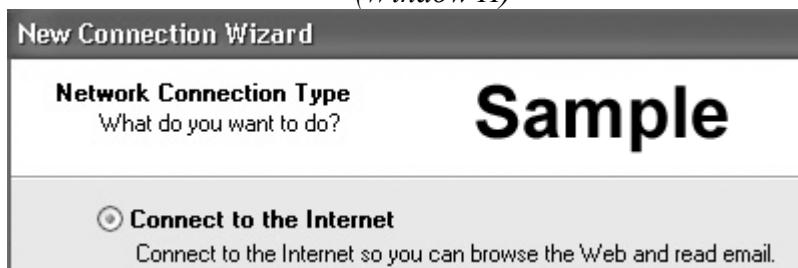
- In “Connections,” click on the “Setup...” button.

(Window G)



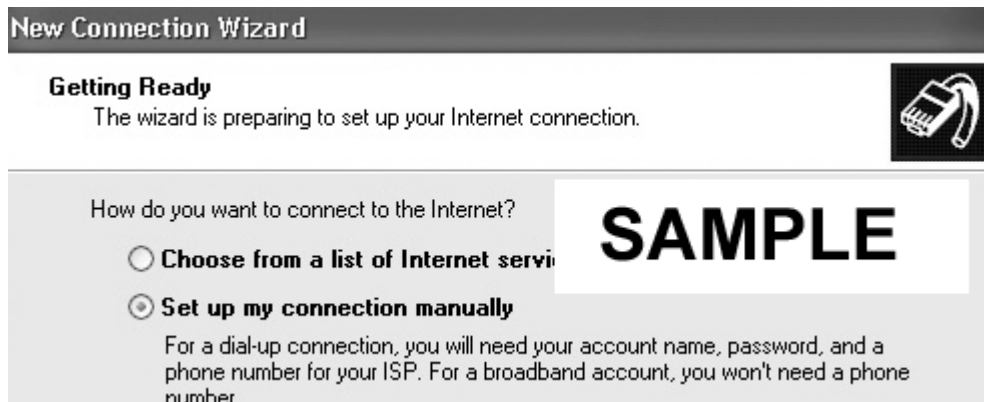
- In the “New Connection Wizard,” click the “Next” button.

(Window H)



- Under “Network Connection Type” select “Connect to the Internet.” Then click the “Next” button.

(Window I)



New Connection Wizard

Getting Ready
The wizard is preparing to set up your Internet connection.

How do you want to connect to the Internet?

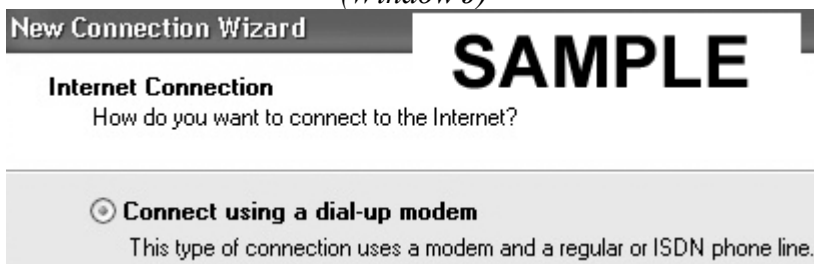
Choose from a list of Internet service providers

Set up my connection manually
For a dial-up connection, you will need your account name, password, and a phone number for your ISP. For a broadband account, you won't need a phone number.

SAMPLE

- Under “How do you want to connect to the Internet?” select “Set up my connection manually.” Then click the “Next” button at the bottom.

(Window J)



New Connection Wizard

Internet Connection
How do you want to connect to the Internet?

Connect using a dial-up modem
This type of connection uses a modem and a regular or ISDN phone line.

SAMPLE

- Under “How do you want to connect to the Internet?” select “Connect using a dial-up modem.” Then click the “Next” button at the bottom.

(Window K)



New Connection Wizard

Connection Name
What is the name of the service that provides your Internet connection?

Type the name of your ISP in the following box.

ISP Name

Midcoast.com

SAMPLE

- In “ISP Name” type in Midcoast.com Then click the “Next” button at the bottom.

(Window L)



The screenshot shows a Windows XP dialog box titled "New Connection Wizard". The main heading is "Phone Number to Dial" with the question "What is your ISP's phone number?". Below this, it says "Type the phone number below." and "Phone number:" followed by a text input field containing the word "SAMPLE". A small icon of a telephone handset is in the top right corner. At the bottom, there are three buttons: "< Back", "Next >", and "Cancel".

- Under the “Phone number” you will need to select a number from our [Contact List](#) in the left-hand side of the packet.

Please be sure to choose a local number for your area.

Midcoast Internet Solutions will not be held responsible for any long distance charges.

Then click the “Next” button at the bottom.

(Windows M)



The screenshot shows a Windows XP dialog box titled "New Connection Wizard". The main heading is "Internet Account Information" with the text "You will need an account name and password to sign in to your Internet account." Below this, it says "Type an ISP account name and password, then write down this information and store it in a safe place. (If you have forgotten an existing account name or password, contact your ISP.)". A small icon of a telephone handset is in the top right corner. The word "SAMPLE" is displayed in large letters. Below this, there are three text input fields: "User name:" with the value "username@midcoast.com", "Password:" with a masked field of seven dots, and "Confirm password:" with a masked field of seven dots and a cursor.

- In the “Internet Account Information” you need to put in your username and password for your midcoast account. Your username is your full e-mail address. Then click the “Next” button at the bottom.

(Window N)



- You have completed the connection wizard! Click “Finish” at the bottom.

(Window O)



- To connect to Midcoast.com, double click on the Midcoast.com shortcut icon, then click on the “Dial” button.

Once you are connected, you can open a web browser to go to the Web, or check e-mail open an e-mail program.

To disconnect right click on the icon of the two computers in the bottom right-hand corner of the screen. Left click on disconnect.